



Whole School Innovation

Chris Gerry

**EVER TRIED.
EVER FAILED.
NO MATTER.
TRY AGAIN.
FAIL AGAIN.
FAIL BETTER.**

Samuel Beckett (1906-1989)

New Line Learning



New Line Learning

- Two Federated schools in Maidstone, Kent
- 2,400 students across both
- Microsoft Innovative School
- Constantly review what we do:
 - Curriculum
 - Relationships
 - Monitoring
 - Technology
 - Spaces
 - Build





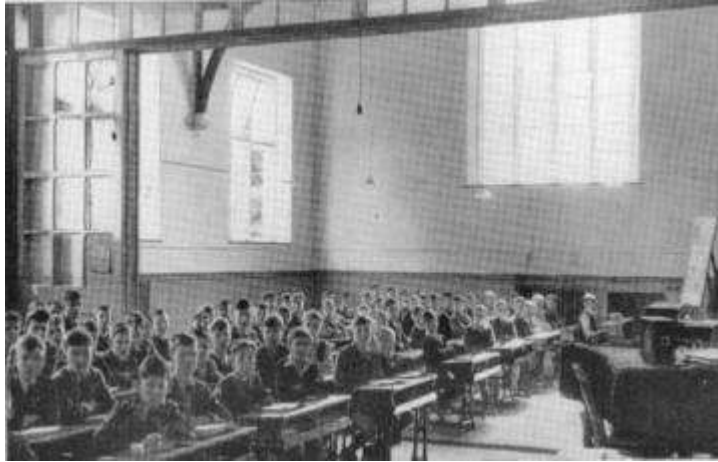
Plazas

What is a Plaza? How we developed the concept.




Plaza 1

Learning Spaces



1970s



Making a cuppa?
Make sure you boil just enough water for
your cup, so that you don't waste energy.

Help save our planet's tree
Collect your family's old col-
magazines and newspapers
to be recycled.







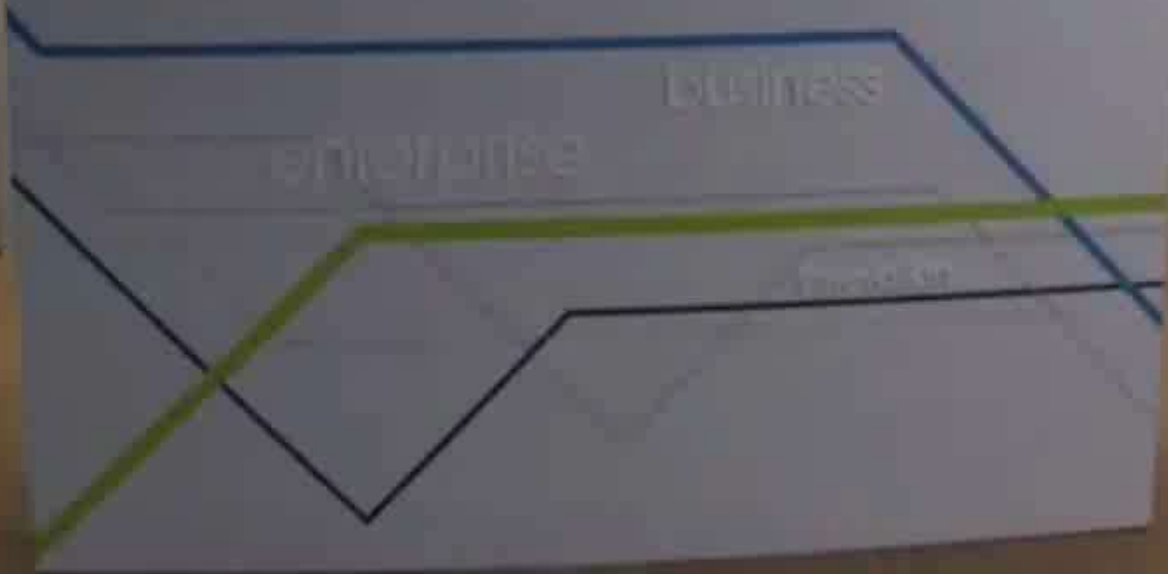




Plaza 2



New Line Learning Academy





The New Build

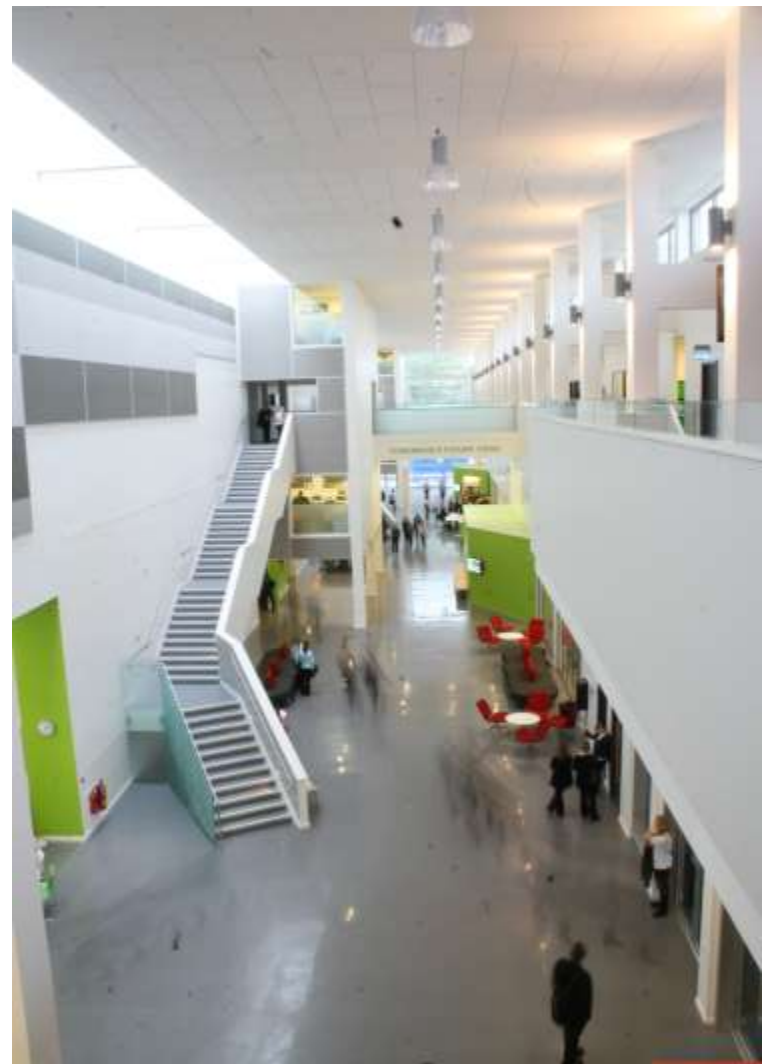


It always seems impossible until it's done
Nelson Mandela

CATERING SUITE

WE HATE BE SHY!







WORK HARD, BE NICE

NEW LINE LE

Meeting agenda







The Plazas

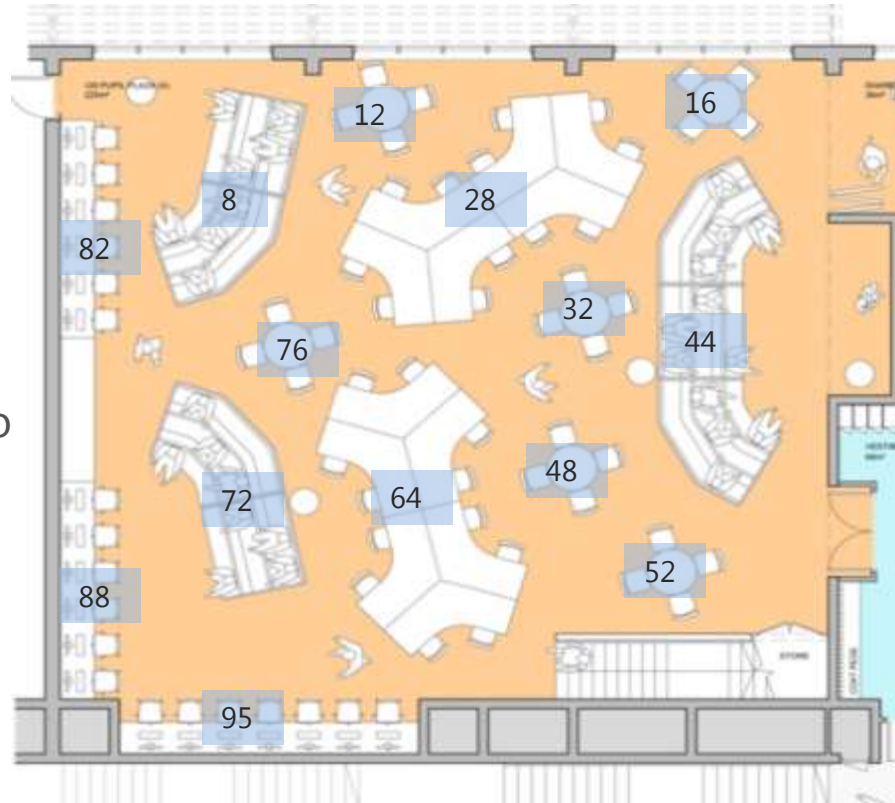


Plaza learning

- They collect a laptop as they come in



- Plazas will accommodate up to 120 students
- Log on wirelessly
- Store and charge it in a locker when they are elsewhere

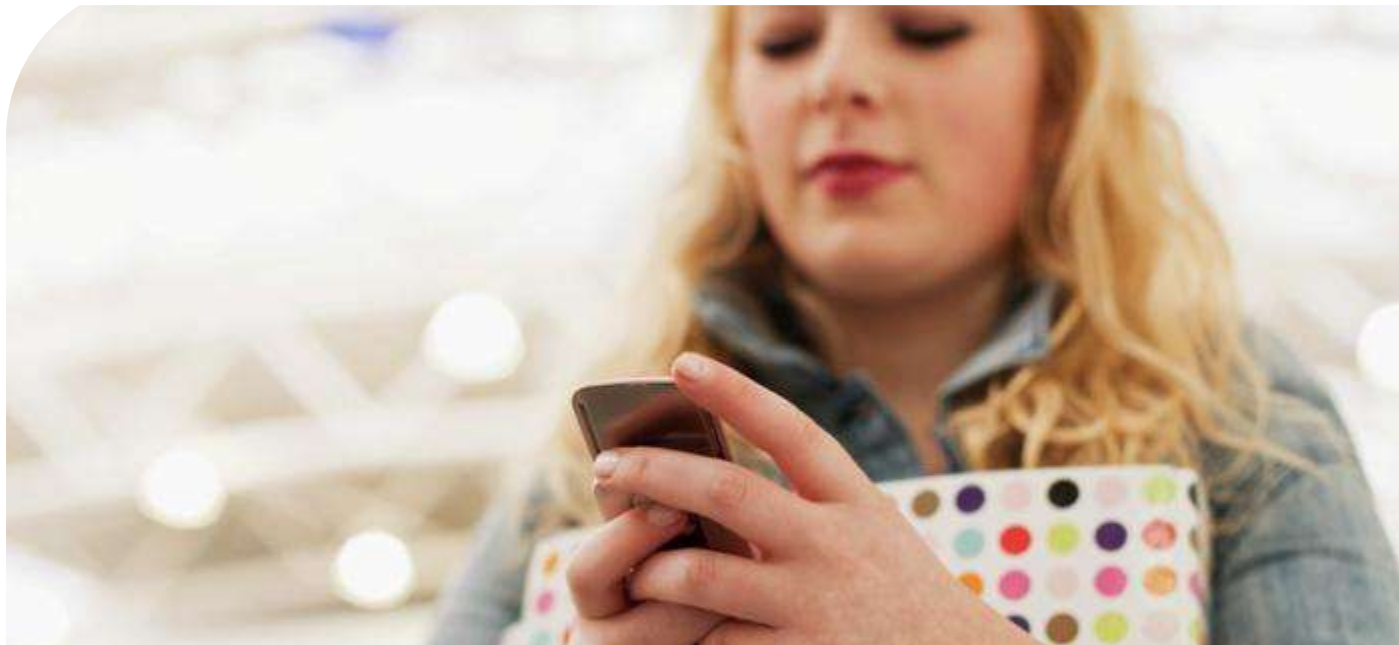




Working in a Plaza

Teaching & Learning





Business Intelligence

Thinking About Risk & Resilience

- Students with dysfunctional behaviours
- Students from high risk backgrounds
- At start 18% on child protection register (now 25%)
- Intelligent led approaches: but how?
- Shift broader moral judgements of teachers by providing more information
- Can we project life trajectories?
- The wider world of 'business intelligence'
- Decrease risk and increase resilience

Resilience was defined as...

- The ability to make the right choices and keep going despite negative feedback.

Process

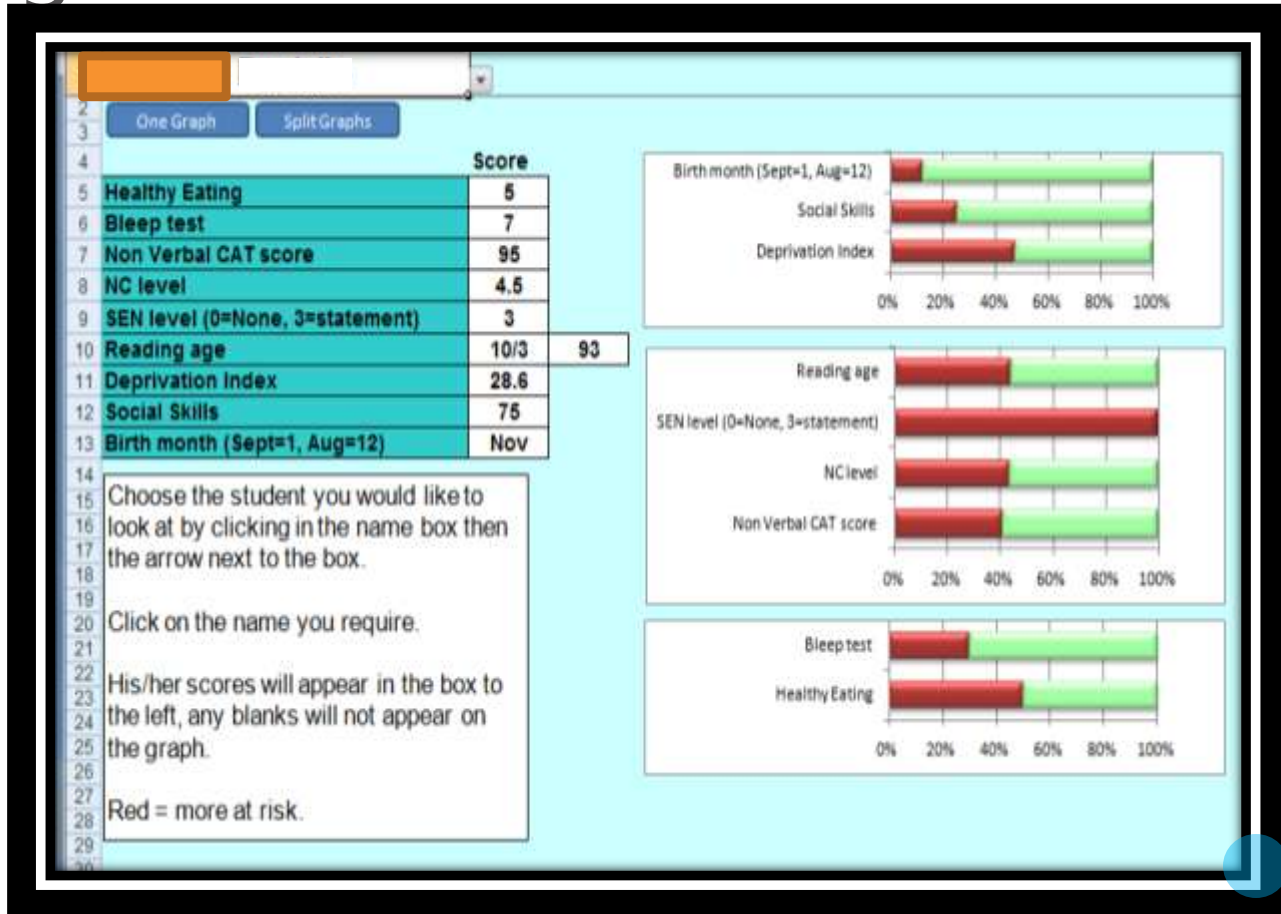
- Working with teachers to surface tacit knowledge: why are some children seemingly doing better and are more adapted to school life?
- What factors might influence this?
- At start (2008): 8% 5+A*-Cs including English and maths; 83% attendance; high exclusion rate; significant behavioural issues; 3 stay on post 16
- 2012: 40% 5+ (gov target); 94% attendance; 1 exclusion; behaviour classed as 'good' by Ofsted; 120 in sixth form

Why?

- Infrastructure built including 2 psychologists
- Wider cultural change in school
- Development of surveying to generate insights
- Arrival of interventions as an idea
- **But...**
- Software a mistake in its complexity
- Need for increasing feedback
- Regression to the mean as an issue for people
- Need for manic obsessive leadership over this

Business Intelligence

- Looked at risks of students failing
 - Low reading age
 - Primary Files – KS2, attendance, self management reports
 - Deprivation
 - Etc
- The more we did the more staff wanted added
- Written a purpose built solution that takes data from Sims and allows us to interrogate it and slice and dice it.
- Uses standard software – SharePoint, performance point, reporting software etc





lookred Insights demo

Visualisation





Search this site...

[Dashboards](#)[Data Connections](#)[Libraries](#)[PerformancePoint](#)[Content](#)

lookred Insights

Sort: Gender

Search...

Gender

Sort: Quantity

<input type="checkbox"/> Male	1191
<input type="checkbox"/> female	1027

Registration

Filter: NONE (whole federation)

Search this site...

- Dashboards
- Data Connections
- Libraries
- PerformancePoint
- Content

lookred Insights | SchoolName: New Line Learning Academy | Sort: Gender

Clear All

ReportLevel

Achievement Points

Self Regulation

Attendance Performance

SchoolName

Sort: Quantity

- Cornwallis Academy 11,26
- New Line Learning Academy 602

Filter: School = New Line Learning





Lookred Insights

Dashboards

- Attendance
- Self Management**
- Achievement

Libraries

- Reports
- Test - Personal Reports

looked Insights

Sort: Gender

Search...

Gender

Sort: Quantity

- Male 1191
- Female 1027

Registration



From the Services, Insights menu , you land on the above screen, click Self Management

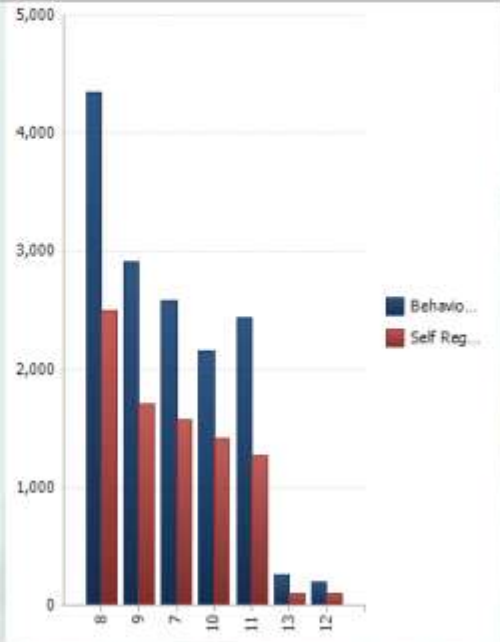
- Dashboards**
- Attendance
- Self Management
- Achievement
- Libraries**
- Reports
- Test - Personal Reports

Self Management Dashboard : SMT Self Management | SMT Exclusions | Year 8 SM | Year 8 SM | Year 9 SM | Year 10 SM | Year 11 SM

SM Incidents Logged (Current Year)

	Term 1	Term 2	Term 3	Term 4	Term 5	Term 6
	Actual	Actual	Actual	Actual	Actual	Actual
All	2173	2800	2776	1193		
For Information	318	230	199	84		
Relationships - Bullying	16	3	4	1		
Relationships - Disablist Bullying				1		
Relationships - Extreme Violence	2	4	7	1		
Relationships - Incidents of a sexual nature	2	3	2			
Relationships - Interfering with another students ...	14	15	15	6		
Relationships - Peer Issues	32	29	12	3		
Relationships - Racist bullying of students or sta ...		1	6			
Relationships - Rudeness/Harassment/Bullying of an ...	24	53	42	18		
Relationships - Rudeness/Harassment/Bullying of me ...	101	164	174	104		
Report Level 1		7	2			
Report Level 2			1			
Self-Management - Behaviour in class is a Health a ...	46	55	57	48		
Self-Management - Deliberate Vandalism	14	12	11	3		
Self-Management - Inappropriate Language	29	29	35	7		
Self-Management - Incident on the way to or from s...	8	17	4	1		
Self-Management - Laptop Damage	11	6	6	6		
Self-management - misuse of laptop - games			19	12		
Self-Management - Persistent poor self-management	297	562	750	244		

SM By Year Group



SM Top 10

This is the summary page for SLT. Click Year 8 SM

Dashboards

- Attendance
- Self Management
- Achievement

Libraries

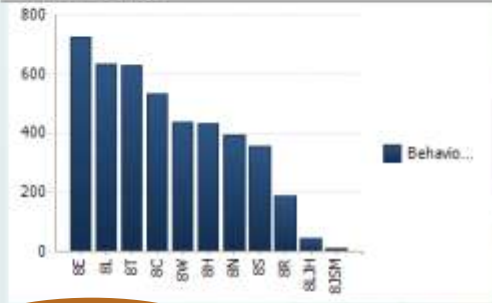
- Reports
- Test - Personal Reports

Self Management Dashboard : [SMT Self Management](#) | [SMT Exclusions](#) | [Year 7 SM](#) | [Year 8 SM](#) | [Year 9 SM](#) | [Year 10 SM](#) | [Year 11 SM](#)

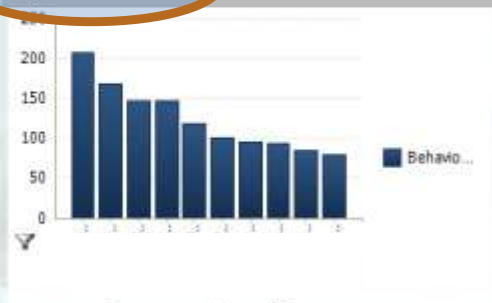
Self Management Current Year by Term Year 8

	Term1	Term2	Term3	Term4	Term5	Term6
	Actual	Actual	Actual	Actual	Actual	Actual
All	931	1442	1345	627		
For Information	0	0	0	0		
Relationships - Bullying	3	1				
Relationships - Extreme Violence	5		5			
Relationships - Incidents of a sexual nature	5	5				
Relationships - Interfering with another students ...	4	6	3	4		
Relationships - Peer Issues	7	4	7			
Relationships - Racist bullying of students or sta...			5			
Relationships - Rudeness/Harassment/Bullying of an...	21	30	19	9		
Relationships - Rudeness/Harassment/Bullying of me...	94	113	147	103		
Self-Management - Behaviour in class is a Health a...	36	52	24	36		
Self-Management - Deliberate Vandalism	40	25	10			
Self-Management - Inappropriate Language	11	8	13	4		
Self-Management - Incident on the way to or from s...	3	6	0			
Self-Management - Laptop Damage	6	3		9		
Self-management - misuse of laptop - games				1		
Self-Management - Persistent poor self-management	312	705	715	217		
Self-Management - Poor self-management	192	207	185	70		
Self-Management - Sexually inappropriate comments/...	3	6				
Self-Management - Theft			5			

SM Yr8 By Reg



SM Yr 8 Top 10



This shows just year 8. Click SM Top 10





Thanks for your time

chris@theskillslab.com