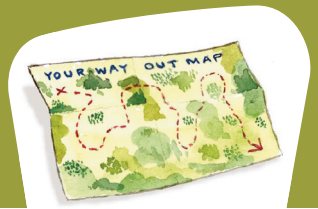


# Insiders' Guide: Course Costs



**Insiders' Guide promotes partnership working** and is designed to be co-facilitated by parents and practitioners together.

The following **estimate** assumes two paid co-facilitators, supporting a group for 12 parents, offering refreshments and crèche facilities.

**Costs per parent** participant are approximately £285. The 2012 Social Return on Investment evaluation indicates that for every £1 invested, the estimated social value created ranges between £25-£38.

<b>Insiders' Guide Course Costs</b>		<b>PER SESSION</b>	<b>6 SESSIONS</b>
Facilitator fees	(2 co-facilitators @ £25phr x 5hrs)	£250	£1500
Venue	- meeting room	£50	£300
	- crèche room	£50	£300
Crèche workers	(2 workers @ £20phr x 3hrs)	£60	£360
Course materials		£30	£180
Refreshments		£10	£60
		<hr/>	<hr/>
		£450	£2,700
<b>One off costs per course</b>			
Home Visiting			£360
Course Administration			£240
Course Manuals	(2 facilitator manuals)		£100
		<hr/>	<hr/>
		<b>Total Course Cost</b>	<b>£3,400</b>

## Note:

- Costs will VARY dependent on facilitator fees, crèche facility costs, venue rates and so on
- Costs assume professionals and parents can work at £25 per hour – some for example, may deliver courses as part of their existing work responsibilities
- Facilitator hours: 5hrs is allocated for the delivery of the 3hr sessions, to allow time to set up and prepare, de-brief, complete parent follow up calls between sessions, sort materials and so on
- Home visits are an effective way to support attendance, checking that parents feel ready to engage with the material and are calculated at 1½ hrs per visit to include travel time
- Home visits may not be necessary as parents may prefer a telephone conversation instead or already be known to course providers and not require the reassurance a home visit can offer
- Administration costs include time to plan, advertise, book places, arrange venue and crèche facilities, source materials, photocopy, postage, phone calls
- Printed colour copies of bound course manuals cost £50 each
- Memory sticks loaded with a full set of manuals are provided to enable printing of further training manuals and downloadable handouts for parent participants.

Download additional information sheets about Insiders' Guide from: [www.amazebrighton.org.uk](http://www.amazebrighton.org.uk) OR [www.boingboing.org.uk](http://www.boingboing.org.uk)

- About Insiders' Guide
- Tried and Tested – Evaluations of Insiders' Guide
- Facilitating Together – the Art of Co-delivering Insiders' Guide
- Background to Insiders' Guide